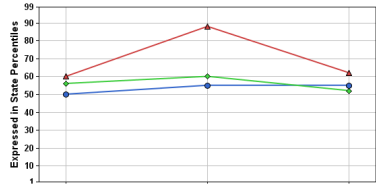


What I used to see...

Where to look now...

**STUDENT HISTORY REPORT**

This report displayed a student's testing performance over time for a single subject. A menu at the top of the report enabled you to select another subject.



**TESTING INFORMATION TILE**

The Testing Information tile appears at the top of the default Student Report. Use the tile filter to change the Focus Subject.



**STUDENT INFORMATION REPORT**

This report displayed information about a student such as sex, race, and English Learner status.

Sex:	Female
Race:	White (not Hispanic)
Academically or Intellectually Gifted:	No
English Learners:	No
Students with Disabilities:	No

**STUDENT INFORMATION SECTION**

The Student Information Section appears on the right side of the default Student Report. It contains additional information about testing and enrollment.

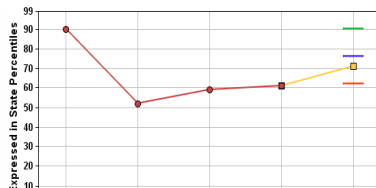
**Sample Student**  
What is the student's past and projected performance?  
This report displays the selected student's testing history, projected performance on future assessments, and demographic information. This data can help teachers understand a student's history and plan for future learning needs.

**Testing Information**  
This data displays the student's performance on prior assessments. The data represents progress of the student's academic performance each year and should not be interpreted as a student's growth trend.

**Student Information**  
Enrolled: 8th Grade  
Sample School  
Sample District  
Last Tested: 7th Grade  
Sample School  
Sample District  
Race: Hispanic  
Sex: Male  
Academically or Intellectually Gifted: No  
English Learners: No  
Students with Disabilities: No

**STUDENT PROJECTION REPORT**

This report displayed a graph with the student's observed percentile line in red and their projected percentile in yellow.



**FUTURE PROJECTED OPTION**

On the Testing Information tile, use the Growth Across Time menu in the tile filter to select Future Projected. Use the Projection drop-down menu to view a different projection.

**Testing Information**  
This data displays the student's performance on prior assessments. The data represents progress of the student's academic performance each year and should not be interpreted as a student's growth trend.

**Future Projected**  
This data displays the student's performance on prior assessments. The data represents progress of the student's academic performance each year and should not be interpreted as a student's growth trend.

**Projection**  
Level 1: 15.1%  
Level 2: 15.1%  
Level 3: 15.1%  
Level 4: 15.1%  
Level 5: 15.1%

Features of the Student Report

**PROJECTIONS AT A GLANCE**

View all of a student's available projections together in one location.

Tests and Subjects	Grade	Probability of Reaching or Exceeding the Indicated Performance Level or Benchmark			
		Below Basic	Basic	Proficient	Advanced
State Test Math	8	100.0%	97.2%	86.3%	47.9%
State Test Reading	8	100.0%	94.6%	74.0%	21.1%
State Test Science	8	100.0%	99.9%	99.8%	98.9%
State Test 2 Algebra I	N/A	100.0%	99.2%	83.2%	23.7%
State Test 2 Biology	N/A	100.0%	99.8%	93.8%	87.7%
State Test 2 English I	N/A	100.0%	93.1%	64.4%	6.8%

**VIEW RESULTS ACROSS TIME**

Examine students' testing history, past expected, and future projected scores.

**Growth Across Time**

This data displays the student's performance on prior assessments. The data represents academic performance each year and should not be interpreted as a student's growth trend.

**Testing History**  
This data displays the student's performance on prior assessments. The data represents academic performance each year and should not be interpreted as a student's growth trend.

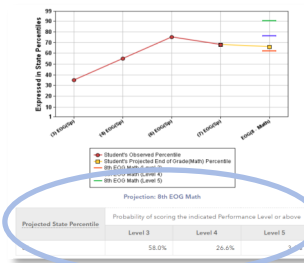
**Projected Probability of Meeting or Exceeding**  
Level 5: 15.1%  
Level 4: 56.4%  
Level 3: 22.5%  
Not Proficient: 100%

**Growth Across Time**

- None Selected
- Past Expected
- Future Projected

**STUDENT PROJECTION REPORT PROBABILITIES**

Probabilities of scoring an indicated Performance Level or above were in a table at the bottom of the Student Projection Report.



**STUDENT PROJECTIONS TILE**

The Student Projections Tile includes all available student projection probabilities. Scroll down to view the tile in the default report. Click View All Subjects to expand and display additional data.

**Student Projections**  
A projection is a reliable indicator of a student's likelihood of meeting or exceeding future performance levels or benchmarks when based on the student's past performance on assessment across subjects.

Tests and Subjects	Grade	Year	Level 1	Level 2	Level 3	Level 4	Level 5
EOG Math	8	2112	15.1%	56.4%	22.5%	100%	100%
EOG Reading	8	2112	21.1%	74.0%	94.6%	100%	100%
EOG English II	8	2112	23.7%	83.2%	99.2%	100%	100%
EOG Math 1	8	2112	47.9%	97.2%	100%	100%	100%
EOG Math 2	8	2112	87.7%	99.8%	100%	100%	100%

**CUSTOM STUDENT REPORTS (CSRs)**

Student lists containing projections could be created, saved, and assigned by those with appropriate permissions.

ID	Student	Grade	Subject	Year	Level 1	Level 2	Level 3	Level 4	Level 5
1	0100010001	8	Math	2112	15.1%	56.4%	22.5%	100%	100%
2	0100010002	8	Math	2112	15.1%	56.4%	22.5%	100%	100%
3	0100010003	8	Math	2112	15.1%	56.4%	22.5%	100%	100%
4	0100010004	8	Math	2112	15.1%	56.4%	22.5%	100%	100%
5	0100010005	8	Math	2112	15.1%	56.4%	22.5%	100%	100%
6	0100010006	8	Math	2112	15.1%	56.4%	22.5%	100%	100%
7	0100010007	8	Math	2112	15.1%	56.4%	22.5%	100%	100%
8	0100010008	8	Math	2112	15.1%	56.4%	22.5%	100%	100%
9	0100010009	8	Math	2112	15.1%	56.4%	22.5%	100%	100%
10	0100010010	8	Math	2112	15.1%	56.4%	22.5%	100%	100%
11	0100010011	8	Math	2112	15.1%	56.4%	22.5%	100%	100%
12	0100010012	8	Math	2112	15.1%	56.4%	22.5%	100%	100%
13	0100010013	8	Math	2112	15.1%	56.4%	22.5%	100%	100%
14	0100010014	8	Math	2112	15.1%	56.4%	22.5%	100%	100%
15	0100010015	8	Math	2112	15.1%	56.4%	22.5%	100%	100%
16	0100010016	8	Math	2112	15.1%	56.4%	22.5%	100%	100%
17	0100010017	8	Math	2112	15.1%	56.4%	22.5%	100%	100%
18	0100010018	8	Math	2112	15.1%	56.4%	22.5%	100%	100%
19	0100010019	8	Math	2112	15.1%	56.4%	22.5%	100%	100%
20	0100010020	8	Math	2112	15.1%	56.4%	22.5%	100%	100%

**FINDING STUDENTS**

CSRs can still be created as before, but now users can use them to find students and navigate easily between them by using the Find Students feature in the Student Report filter panel.

**Find Students**

Find students by...

- School and Grade
- Custom Student Reports

Custom Reports

5th Grade Intervention Block

State Test Math	District	Level 1	Level 2	Level 3	Level 4	Level 5
	District	6	7	8		
	School	6	7	8		
	Teacher	--	7	8		

I want to know...

What do I click?

What will I see?



A specific student's testing history in Reading

A student's testing history in Math, along with their projected performance level on the upcoming Math assessment

How to view all of the available projections for a student

How a student was expected to score last year compared to how they actually scored

If a student might have had limited access to effective instruction in the past

- ⇒ In the **Reports** menu, select **Student Report**
- ⇒ In the filter panel to the left, click **Find Students** to search and select a student
- ⇒ On the **Testing Information** tile, select **Reading** as the **Focus Subject**
- ⇒ On the **Testing Information** tile, select **Math** as the **Focus Subject**
- ⇒ Under **Growth Across Time**, select **Future Projected**
- ⇒ In the **Projection** drop-down menu, select the upcoming Math assessment
- ⇒ Use the filter panel to the left to select all options under **Tests and Subjects**
- ⇒ Turn off all **Data Tiles** except **Student Projections**
- ⇒ In the **Student Projections** tile, click **View All Subjects**
- ⇒ Scroll down as needed
- ⇒ Click refresh 
- ⇒ In the **Testing Information** tile filter, select **Past Expected** from the **Growth Across Time** menu
- ⇒ Select a year using the radio buttons below the graph
- ⇒ Click refresh 
- ⇒ Turn off all **Data Tiles** except for **Value-Added History**

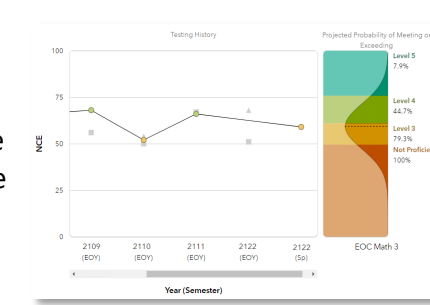
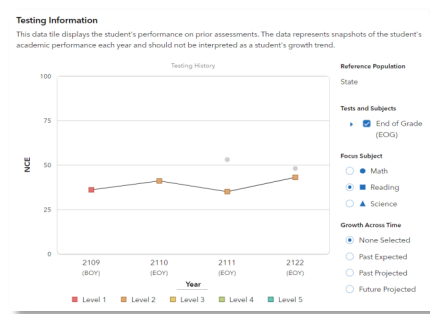
You will see a graph with the student's testing history in Reading. There will also be a table below the graph containing the students' full testing history.

You will see a graph of the student's testing history in Math plus a colorful display with the most likely performance and the probabilities that they will meet or exceed each level.

You will see all of the student's available projections to upcoming assessments, along with filters that allow you to narrow your focus as needed.

You will see a bell curve with the student's expected score in the center and their observed score on the line graph. Below the radio button is the percentile of that observed score within their expected score distribution.

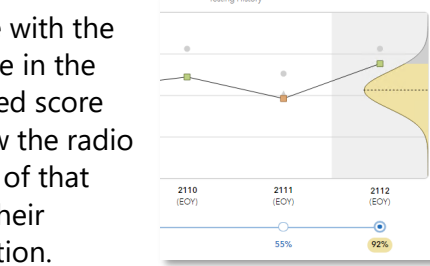
Depending on your account permissions, you will see the Value-Added results for the student's district, school, and teacher by test and subject.



Student Projections

A projection is a reliable indicator of a student's likelihood of reaching or exceeding future performance levels or benchmarks. It is based on the student's past performance on assessments across subjects.

Tests and Subjects	Grade	Not Proficient	Level 1	Level 2	Level 3	Level 4	Level 5
EOG Math	7	100.0%	0.0%	0.0%	0.0%	0.0%	0.0%
EOG Reading	7	100.0%	0.0%	0.0%	0.0%	0.0%	0.0%
EOC English II	N/A	100.0%	0.0%	0.0%	0.0%	0.0%	0.0%
EOC Math 1	N/A	100.0%	0.0%	0.0%	0.0%	0.0%	0.0%
EOC Math 3	N/A	100.0%	0.0%	0.0%	0.0%	0.0%	0.0%



Tests and Subjects	Entity	2110 (Sp)	2111 (Sp)	2112 (Sp)
State Test Math	District	4	5	6
	School	4	5	6
	Teacher	--	5	6
State Test Reading	District	4	5	6
	School	4	5	6
	Teacher	--	5	6

What do the data tiles tell me?

Testing Information

This data tile appears at the top of the default view and provides information about the student's testing history. The tile filter also provides the following Growth Across Time options:

- **None Selected**—displays a student's testing history.
- **Past Expected**—adds a bell curve representing the student's expected score on a center dotted line enabling you to compare that with the student's observed score. Expected scores were determined after the student tested using the student's testing history and the student's own cohort's statewide data.
- **Future Projected**—adds a bell curve representing the students most likely score on a center dotted line enabling you to compare that with the color-coded backdrop of all possible performance levels. Their probabilities of meeting or exceeding each performance level or benchmark are listed along the right side of the graph.

Student Projections

This is the second tile displayed on the default report. It provides a reliable indicator of the student's likelihood of reaching or exceeding future performance levels or benchmarks. It is based on the student's past performance on assessments across subjects.

Value-Added History

This is the third tile displayed on the default report. Depending on your account permissions, it displays the district, school, and teacher value-added measures at the time the student was connected to them.